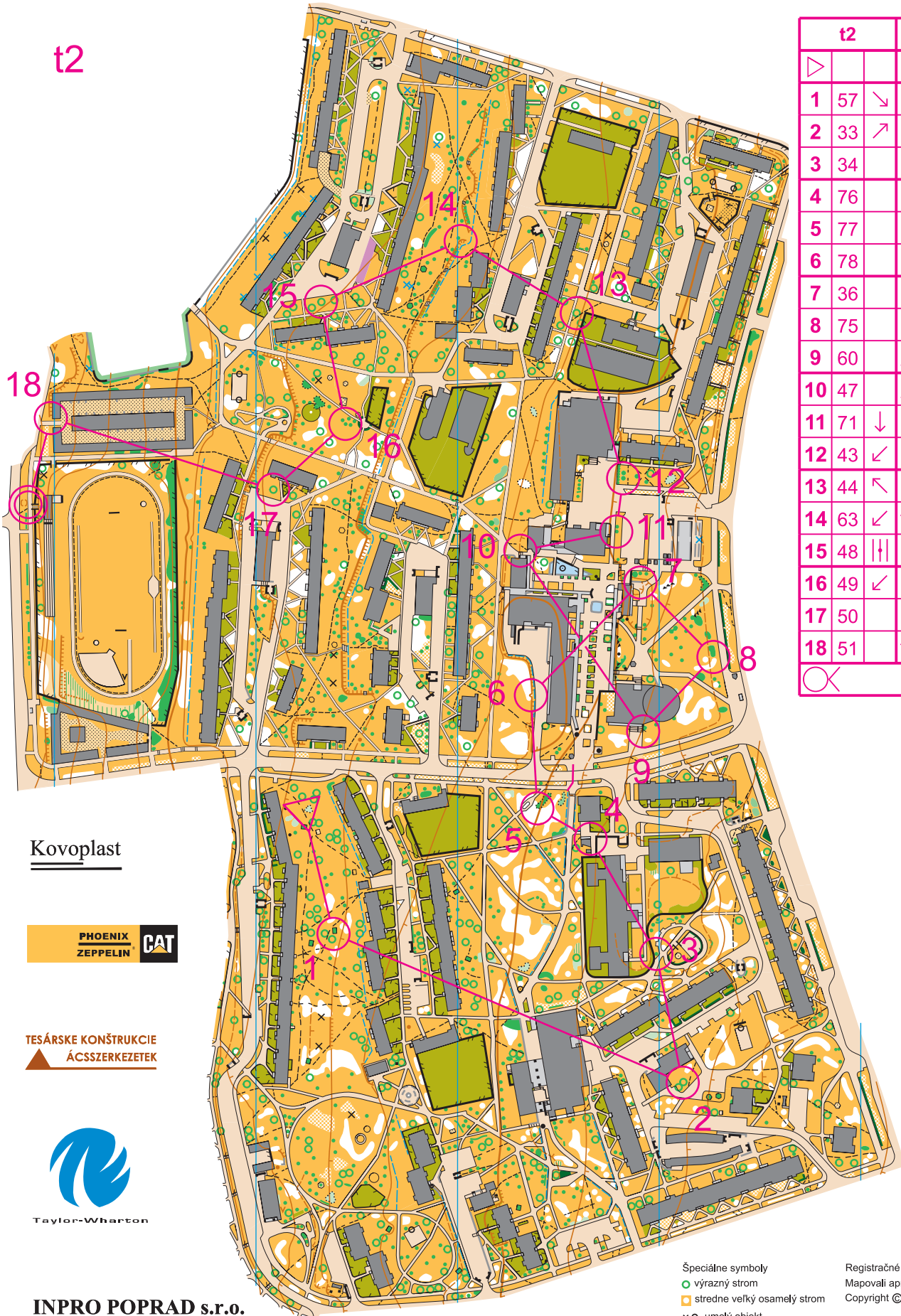


t2



	t2		2,1 km		25 m
			⊗		⊙
1	57	↘	△		⊙
2	33	↗	△		⊙
3	34		⊗		⊙
4	76		■		⊥
5	77		⊗		⊙
6	78		∩	∩	
7	36		≡	0,7	⊙
8	75		⊗		⊙
9	60		↗		⊙
10	47		↗		⊙
11	71	↓	⊗		⊙
12	43	↙	⊗		⊙
13	44	↖	△	☼	⊙
14	63	↙	∩		<
15	48		△	☼	⊙
16	49	↙	⊗		⊙
17	50		△	☼	⊙
18	51		∩		⊥
			⊗	70 m	⊙

Kovoplast



TESÁRSKE KONŠTRUKCIE
ÁCSZERKEZETEK



INPRO POPRAD s.r.o.



Špeciálne symboly

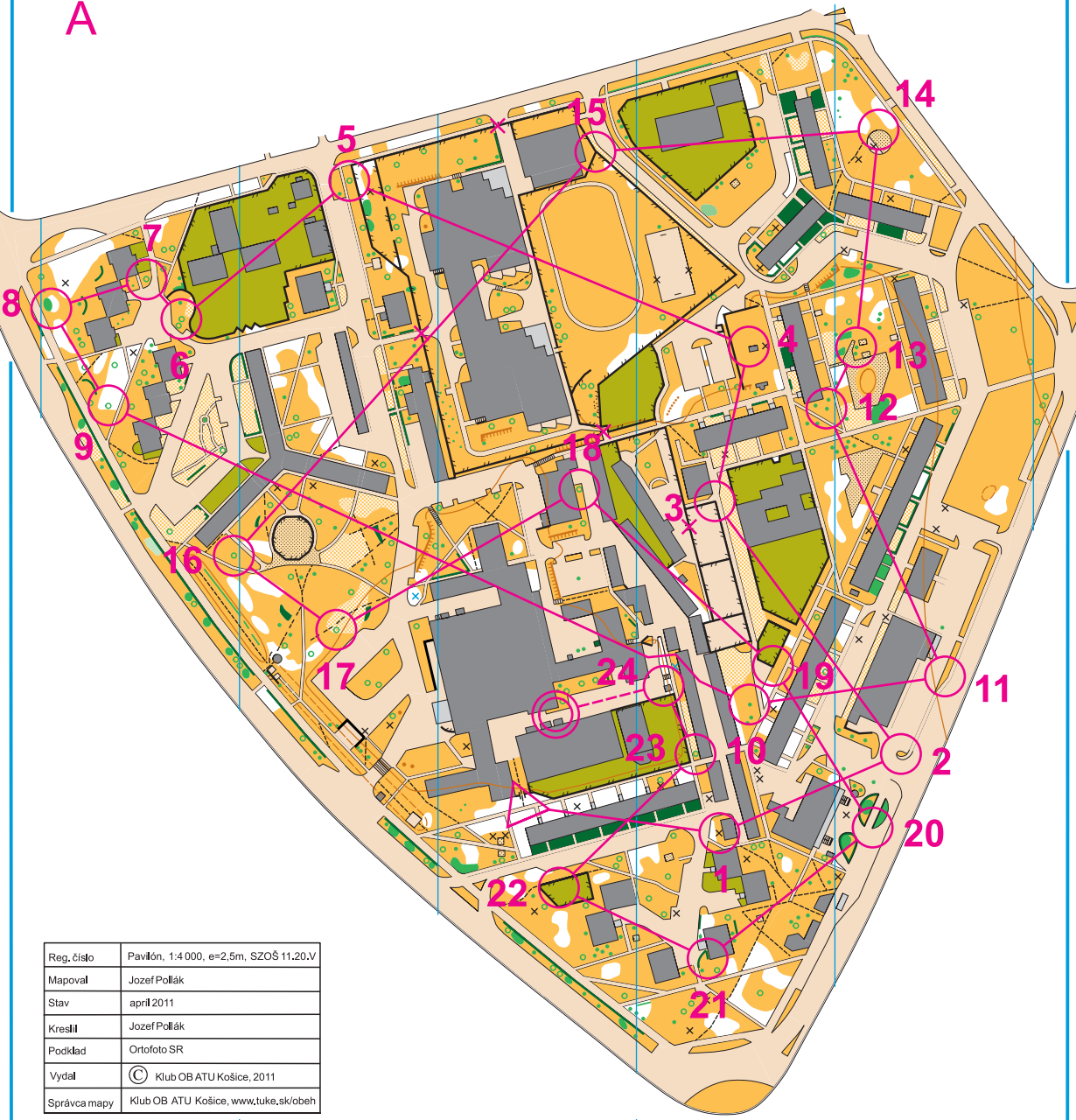
- výrazný strom
- stredne veľký osamelý strom
- × o umelý objekt

Registračné číslo SZOŠ 14.28.V 4 000

Mapovali apríl 2014 Róbert Miček, Jozef Pollák

Copyright © 2014 Klub OB ATU Košice

A



Reg. číslo	Pavilón, 1:4 000, e=2,5m, SZOŠ 11.20.V
Mapoval	Jozef Poliak
Stav	april 2011
Kreslil	Jozef Poliak
Podklad	Ortofoto SR
Vydal	© Klub OB ATU Košice, 2011
Správca mapy	Klub OB ATU Košice, www.tuke.sk/obeh

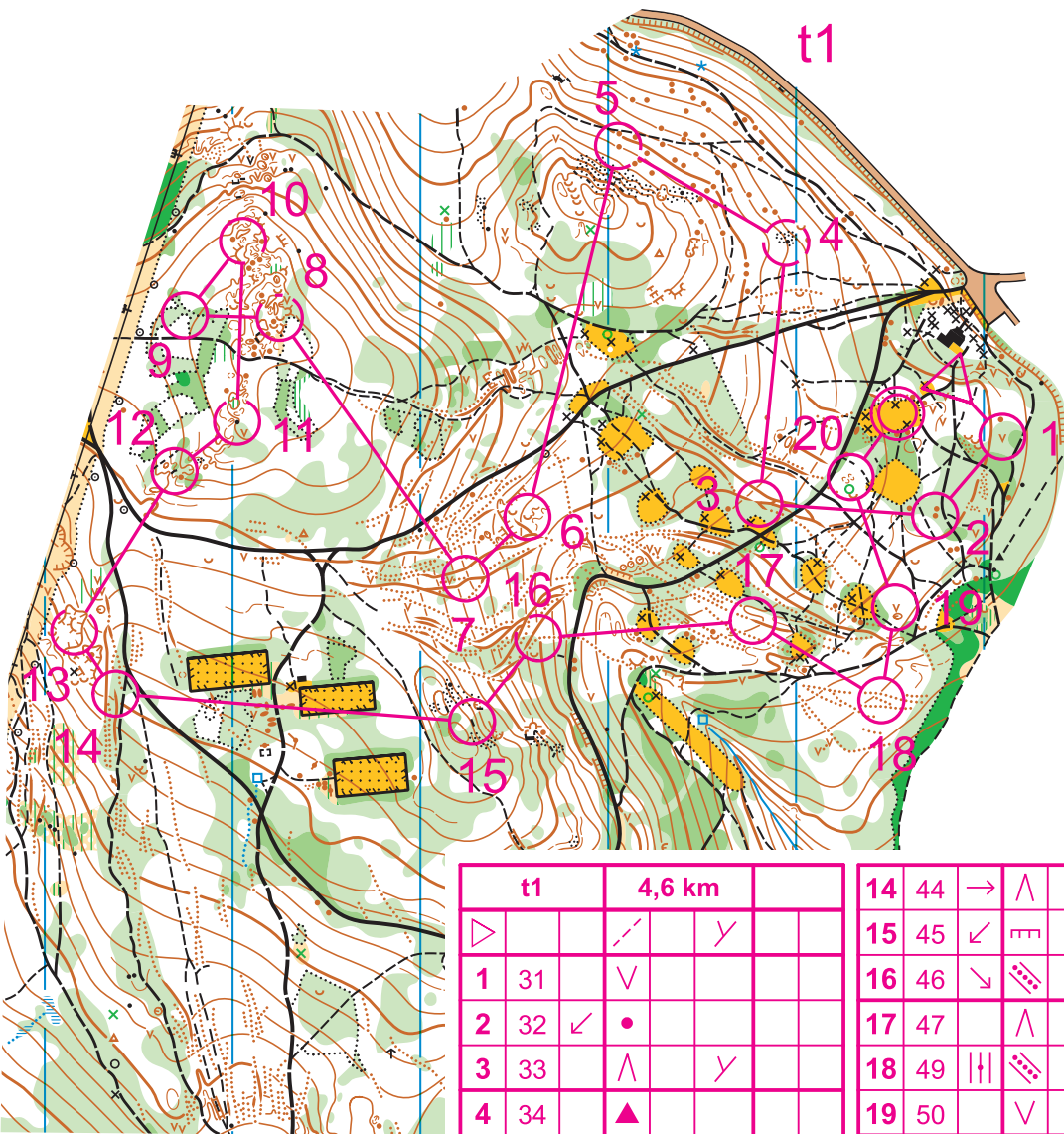
Táto mapa slúži pre školské súťaže, jej vydanie podporil SZOŠ

A		3,5 km	
▷		↗	↘
1	31	✕	
2	32	◇	
3	33	↖	└
4	34	■	└
5	35	△	
6	36	↗	△
7	37	△	

8	38	⊗		○
9	39	△		
10	40	↑	⊗	○
11	41	◇		
12	42		⊗	○
13	43	↗	⊗	○
14	47	⊙		○
15	48	↖	↘	
16	46	△		



17	49	△		
18	50	△		
19	51	↖		↘
20	53	⊗		↘
21	54	↗	⊗	
22	56	↖	✕	
23	57	△		
24	100	■		└

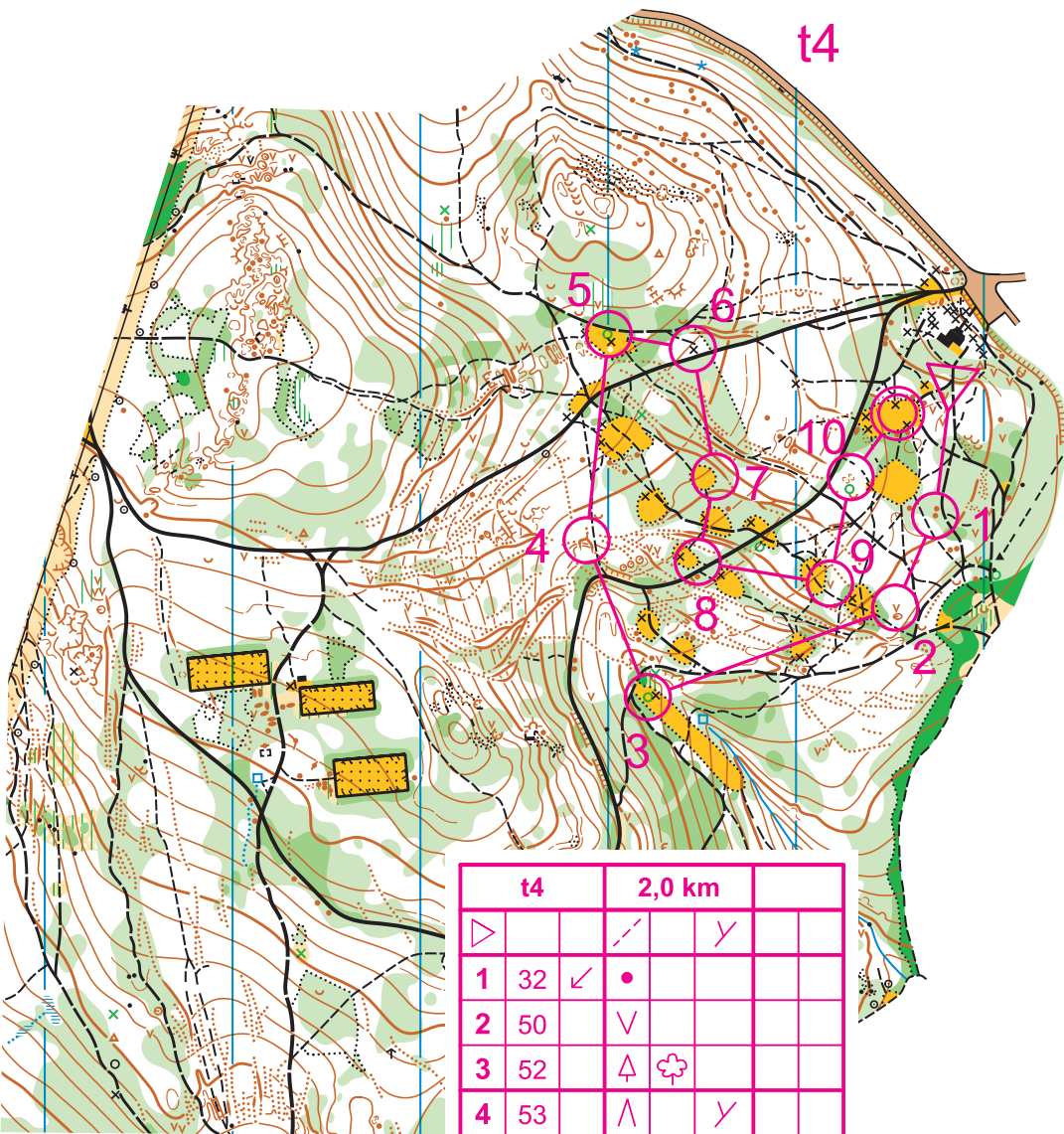
○ --- 70 m --- ○



	t1	4,6 km			
▷		/	∟		
1	31	∨			
2	32	↙	•		
3	33	∧	∟		
4	34	▲			
5	37	•		○	
6	36	↘	∪		
7	35	∧	▨	∟	
8	38	↗	∪		
9	39	⋯		○	
10	40	⊖	∪		
11	41	▲			
12	42	▨		∟	
13	43		▨		↘

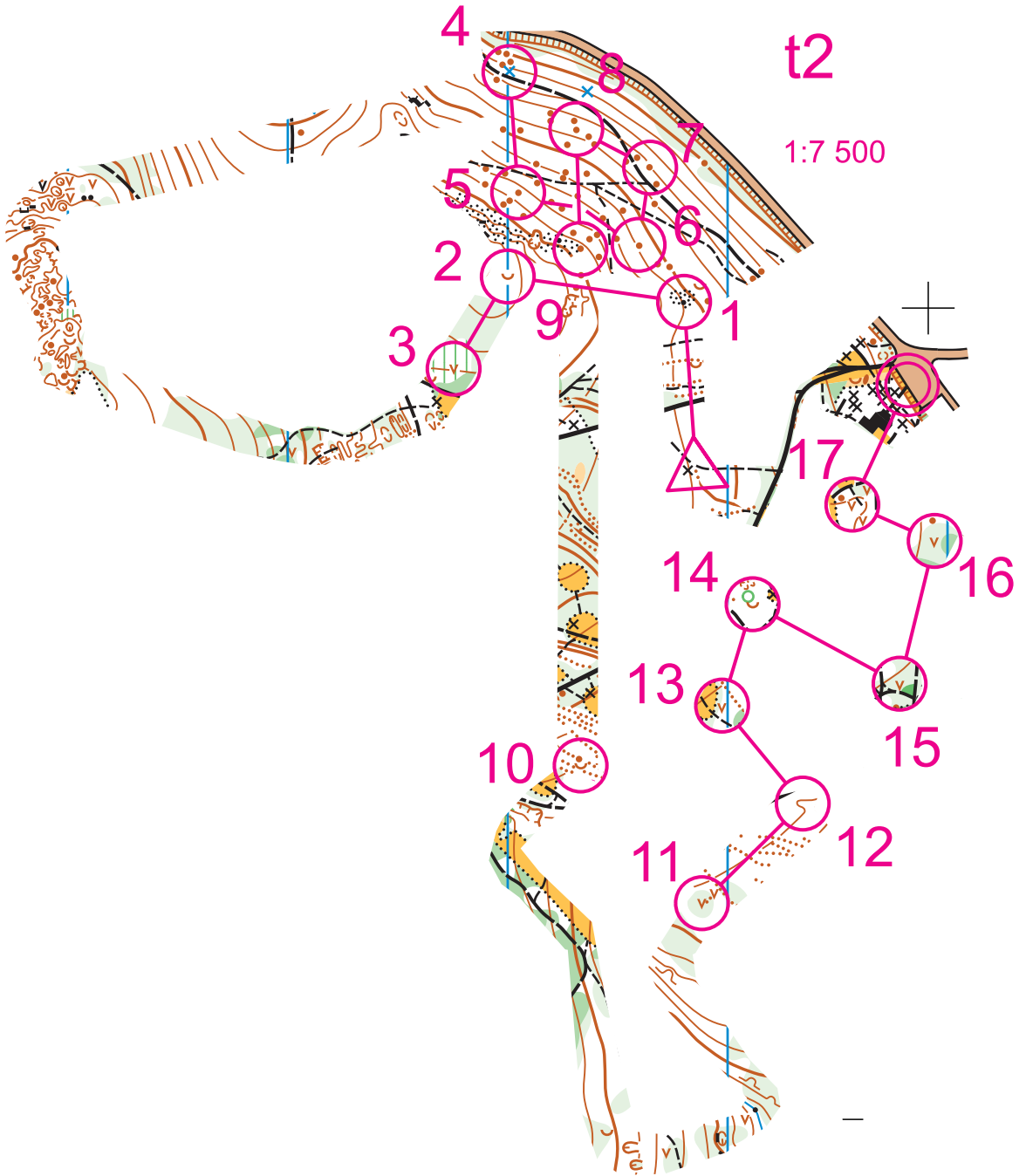
14	44	→	∧		∟
15	45	↙	▨		∟
16	46	↘	▨		<
17	47		∧		<
18	49		▨		
19	50		∨		
20	51	↗	○	∪	


 110 m



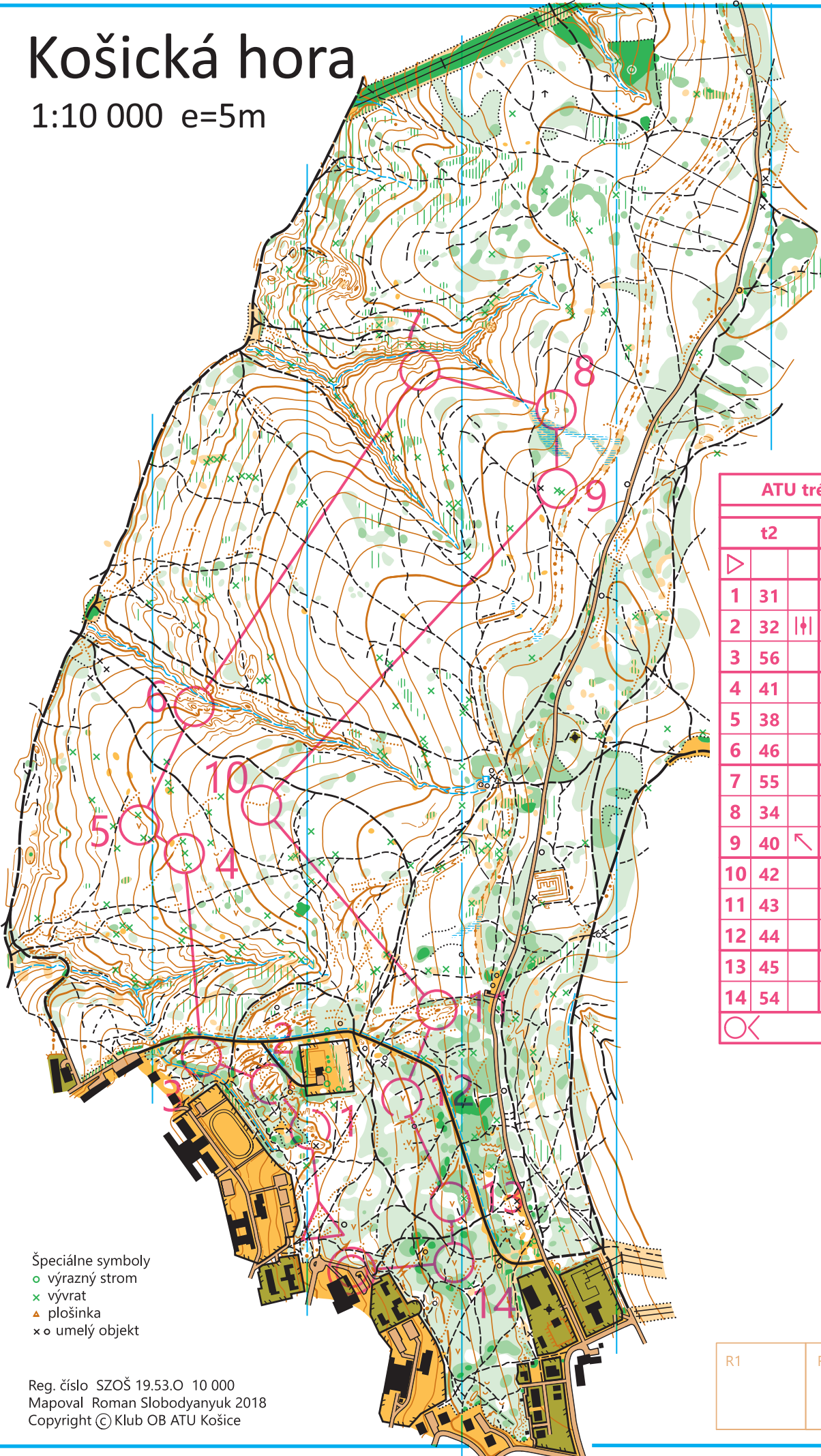
t4

	t4	2,0 km			
▷		↗	∨		
1	32	↙	•		
2	50	∨			
3	52	△	♣		
4	53	∧		∨	
5	54	△	⚡		
6	55	×			
7	56	◇			⊙
8	57	◇			➤
9	48	∨			
10	51	↗	○	—	
⊗	110 m		⊗		



Košická hora

1:10 000 e=5m



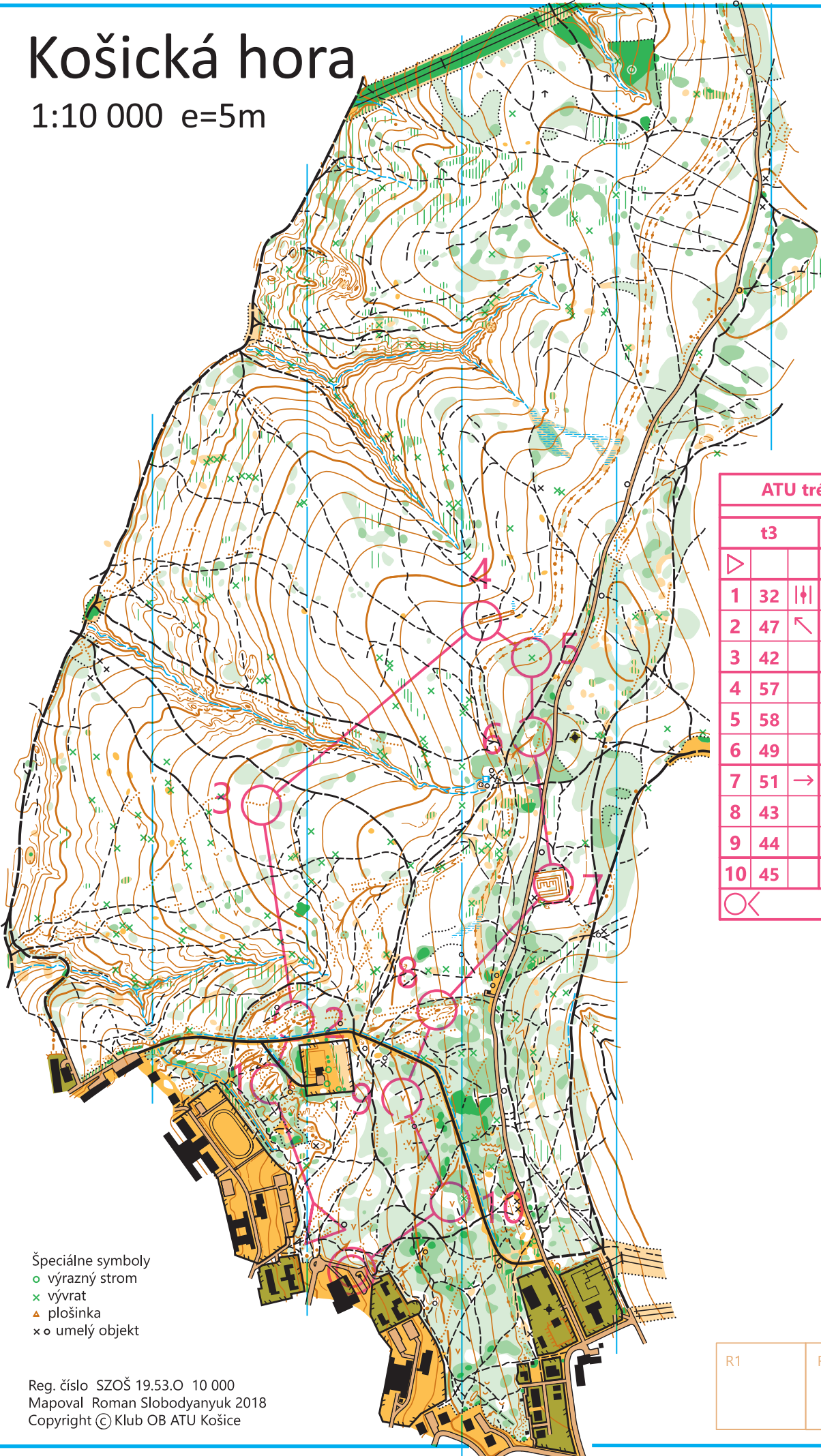
ATU tréning jar 2020				
t2		4,5 km		
▷		↗	↘	
1	31	⊖	⌒	
2	32		∧	
3	56	∧	↘	
4	41	⊗		
5	38	∇		
6	46	○		
7	55	∩	⌒	
8	34	∩	⌒	
9	40	↖	⊗	
10	42	▨	<	
11	43	●		
12	44	∇		
13	45	∇		
14	54	∇		
○	<	200 m		⊗

- Špeciálne symboly
- výrazný strom
 - x vývrät
 - ▲ plošina
 - o umelý objekt

R1	R2	R3
----	----	----

Košická hora

1:10 000 e=5m



ATU tréning jar 2020

t3		2,9 km	
▷		↗	↘
1	32		∧
2	47	↖	●
3	42	▨	<
4	57	⊖	⊙
5	58	⊗	
6	49	∧	↗
7	51	→	∩
8	43	●	
9	44	∨	
10	45	∨	
○		230 m	⊙

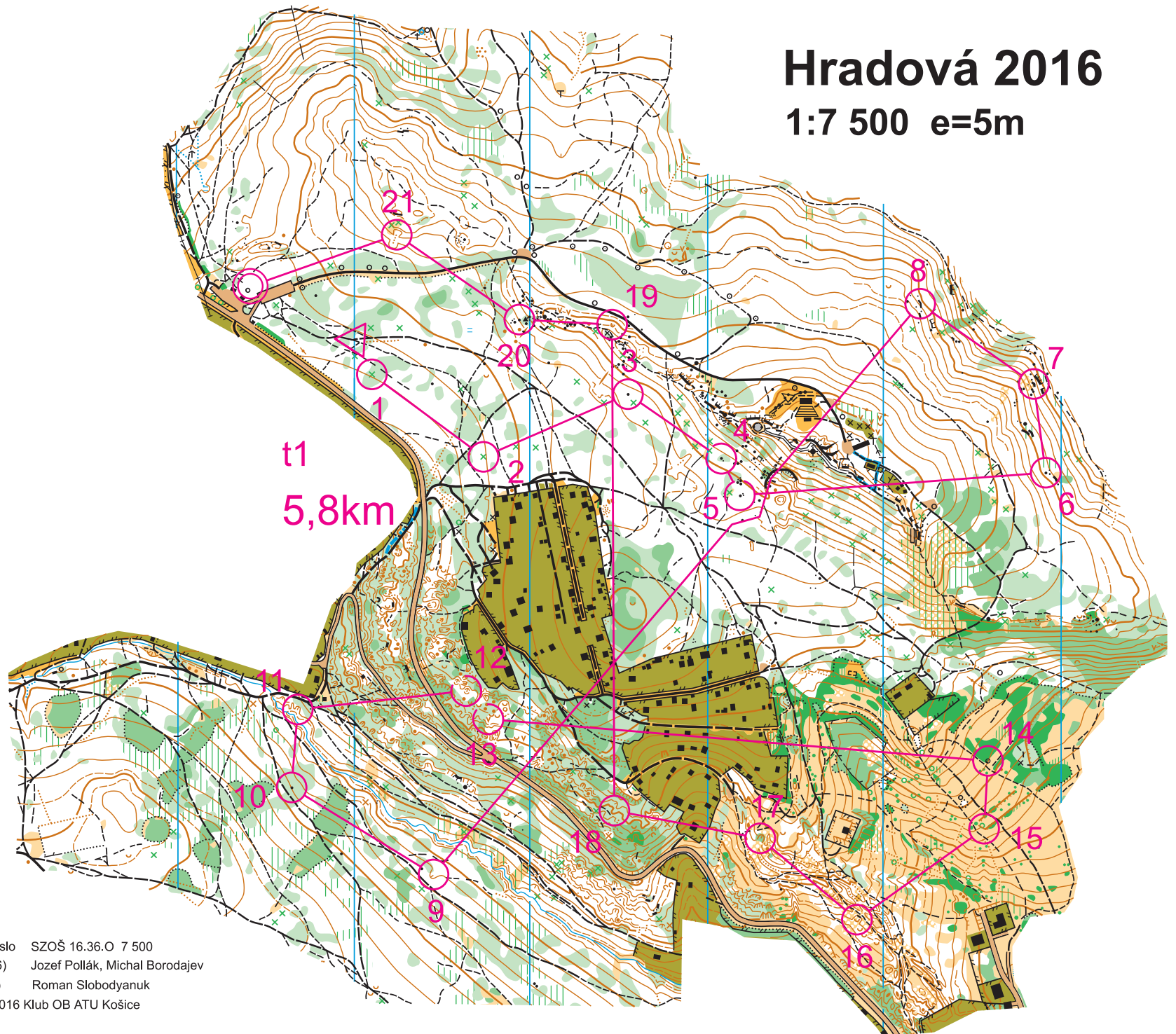
Špeciálne symboly

- výrazný strom
- x vývrät
- ▲ plošina
- o umelý objekt

R1	R2	R3
----	----	----

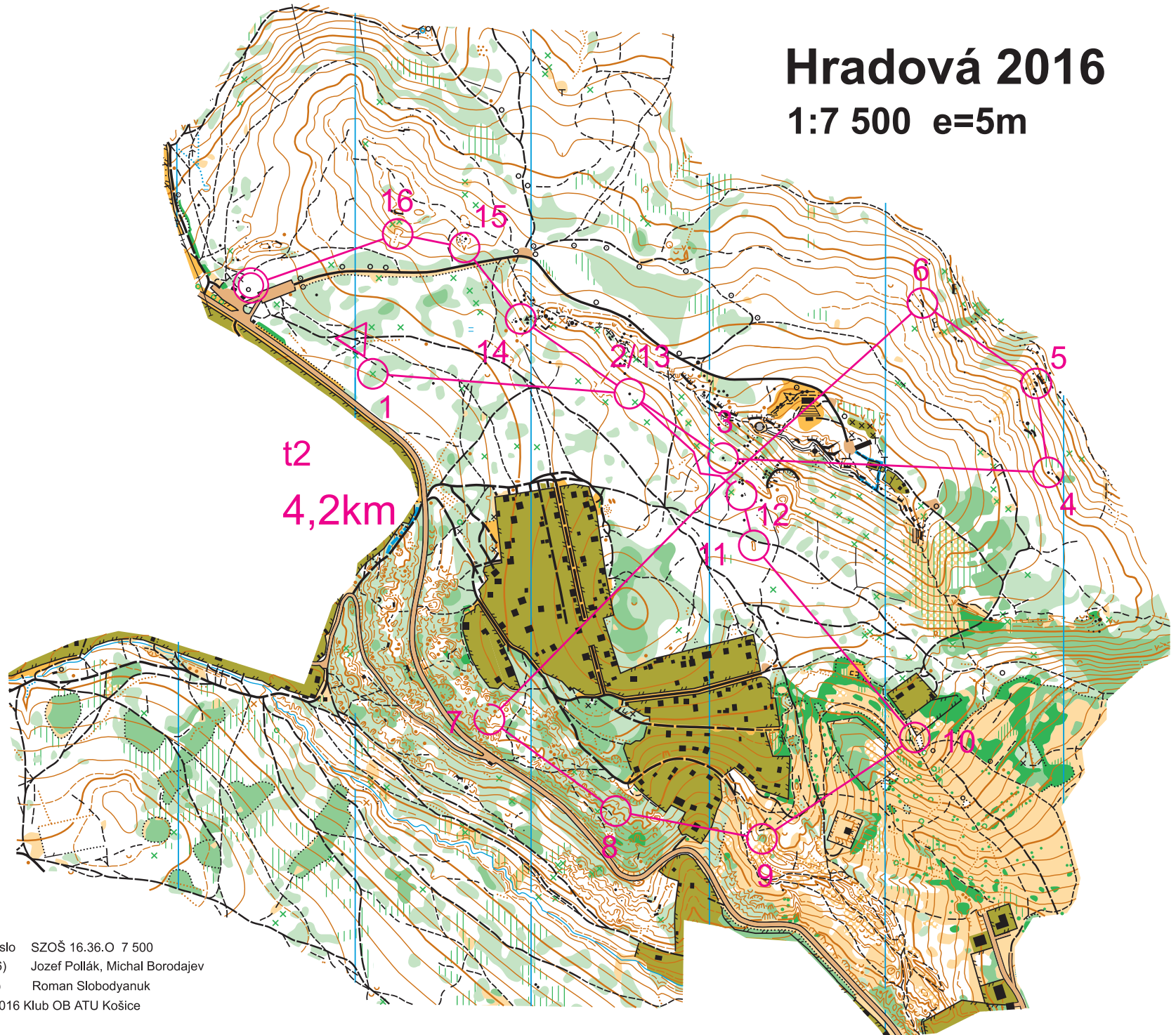
Hradová 2016

1:7 500 e=5m



Hradová 2016

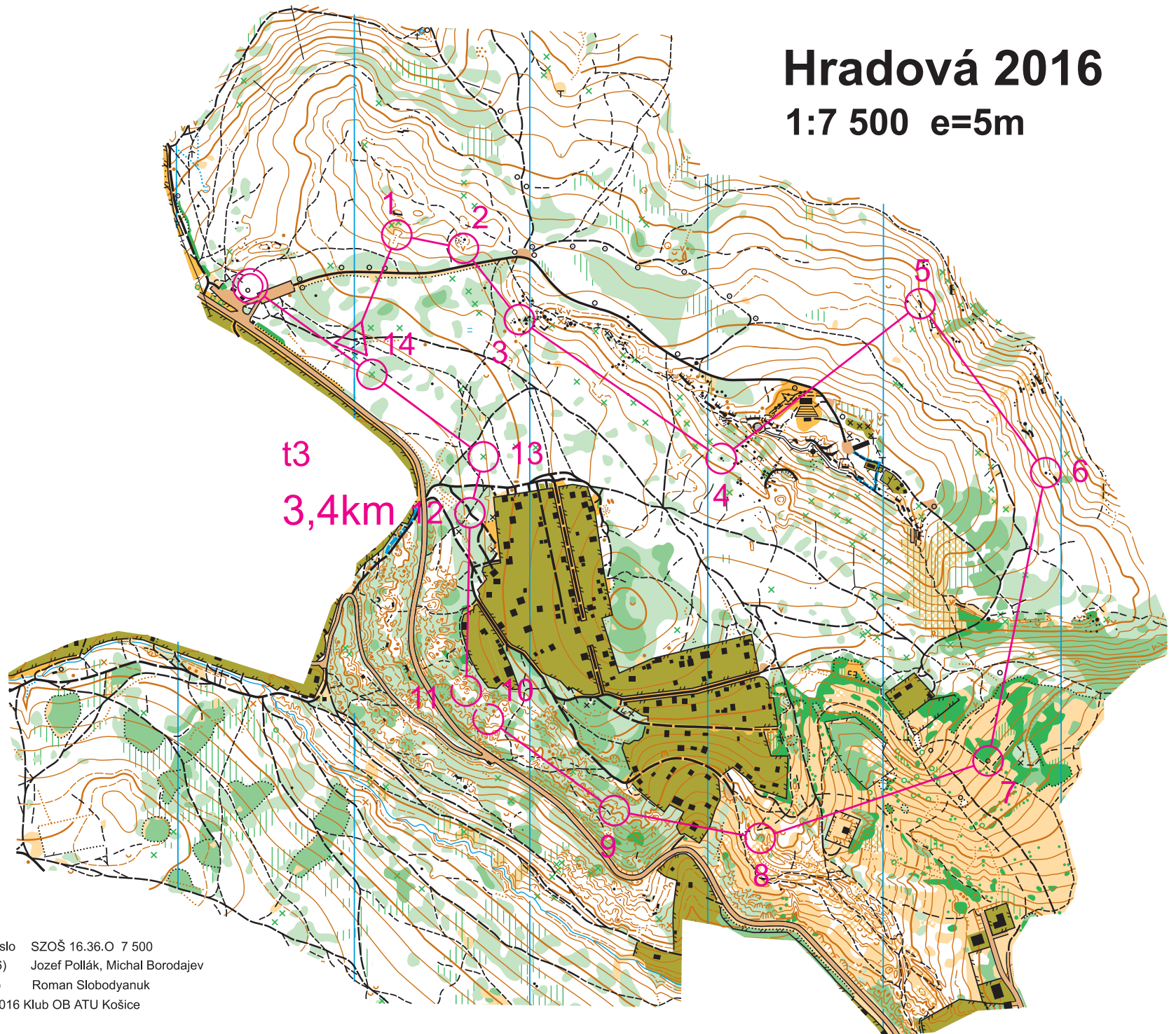
1:7 500 e=5m



t2
4,2km

Hradová 2016

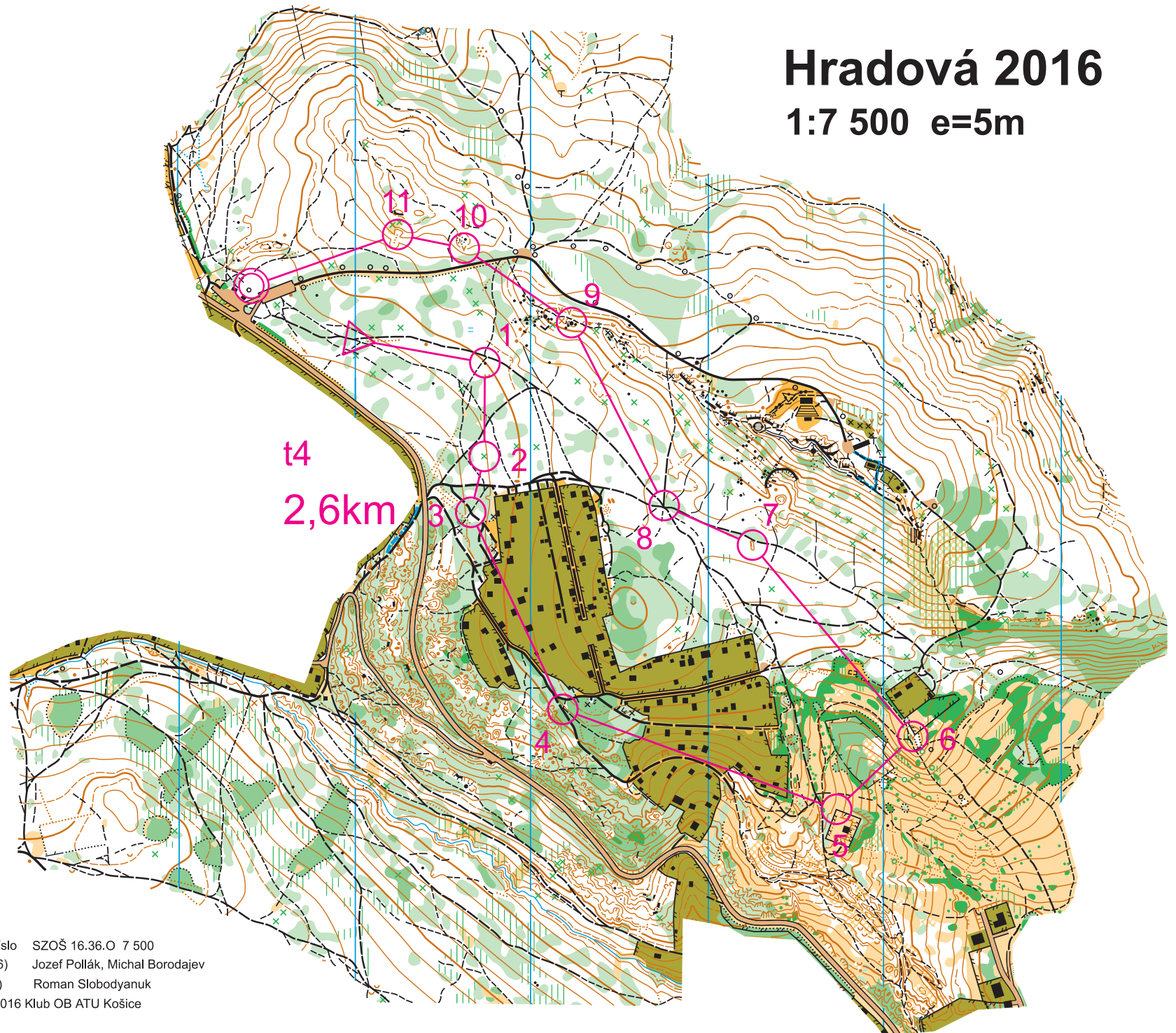
1:7 500 e=5m



Registračné číslo SZOŠ 16.36.O 7 500
Mapoval (2006) Jozef Pollák, Michal Borodajev
Revízia (2016) Roman Slobodyanuk
Copyright © 2016 Klub OB ATU Košice

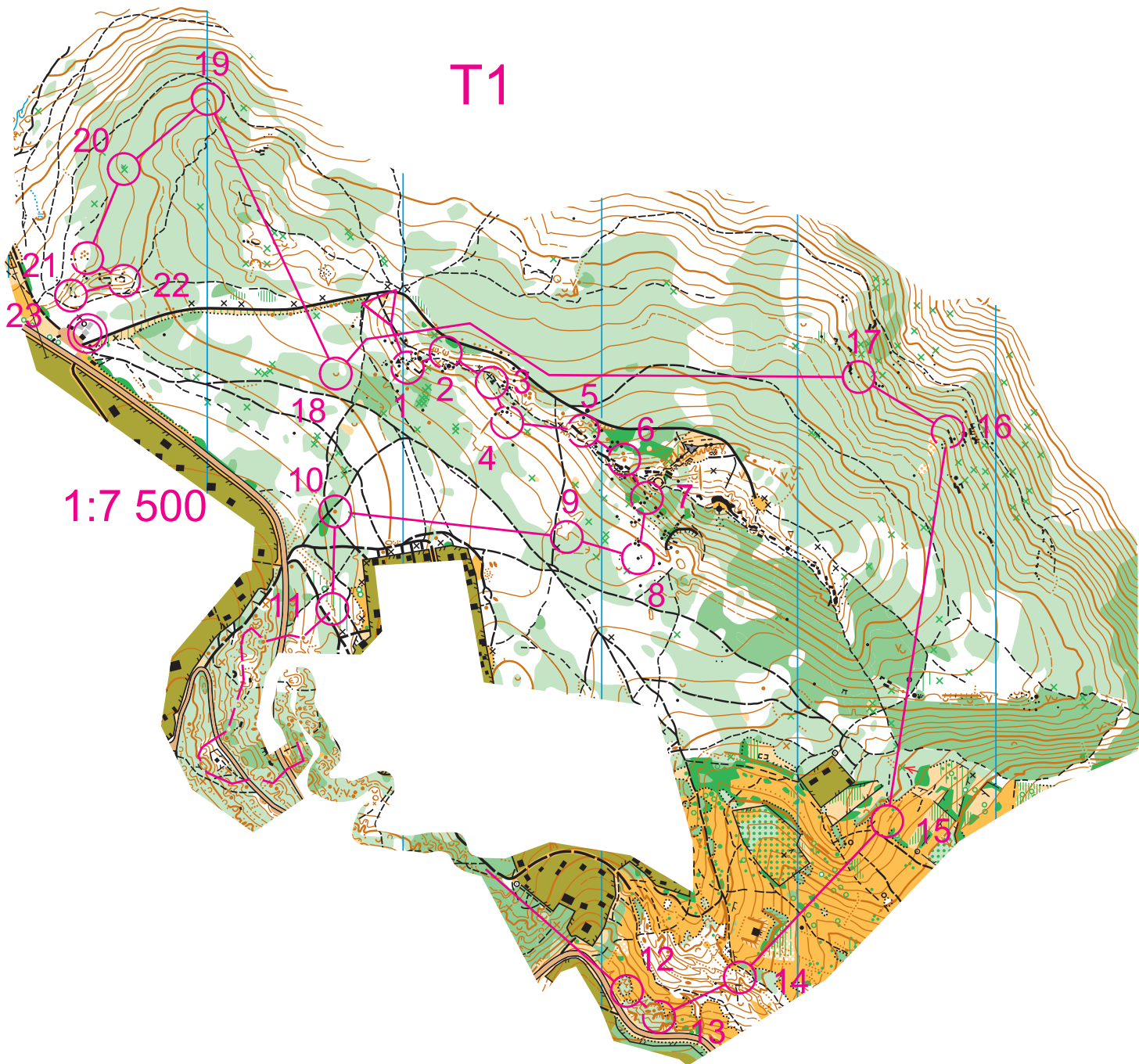
Hradová 2016

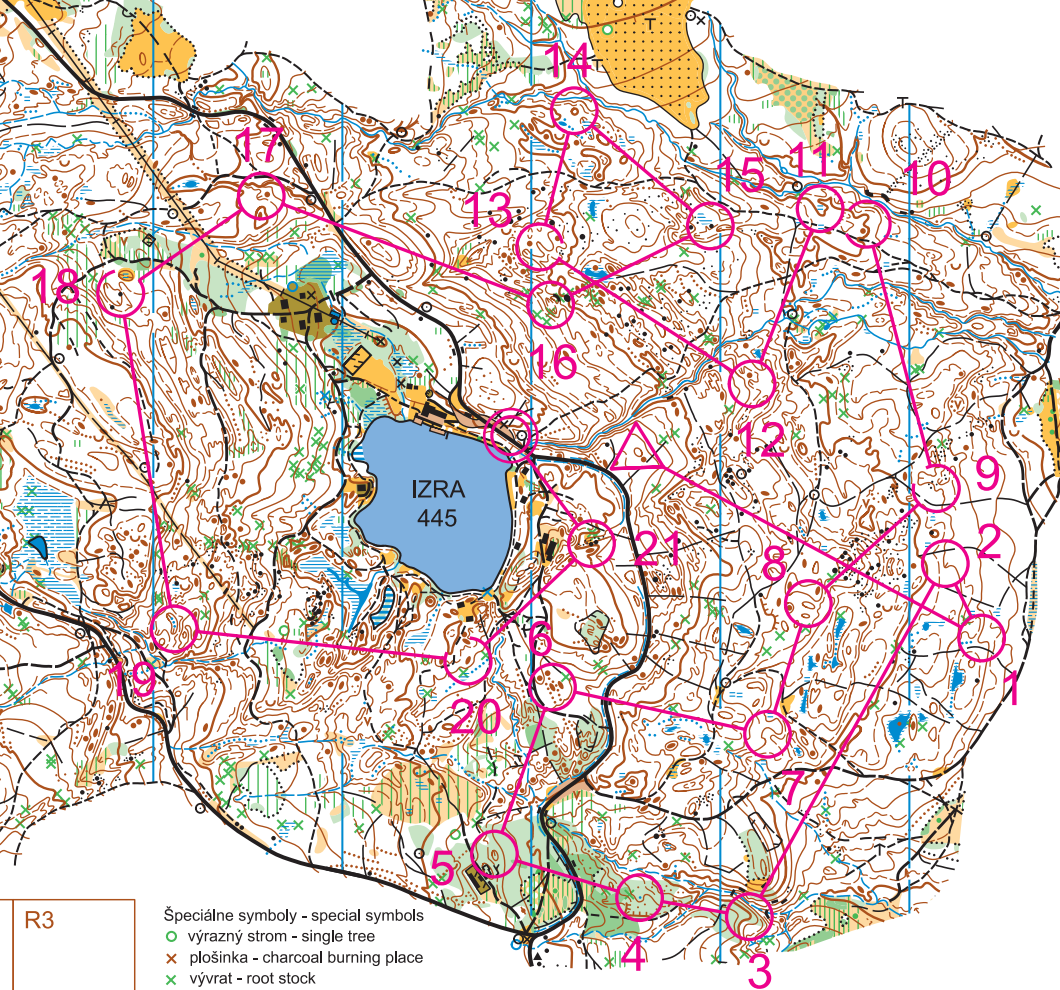
1:7 500 e=5m



T1

1:7 500





	A	6,0 km			
		○			
1	31	∩			
2	32	∩			
3	33	⊢			
4	34	∩ -			
5	35	⊖			
6	36	•			
7	37	∩			
8	38	○			
9	39	∩ -			
10	40	∩ -			
11	41	≡			
12	42	∩			
13	43	∩			
14	44	○			
15	45	▲			
16	46	⊖			
17	47	∩			
18	48	▲			

19	49		⊖			○
20	50		•			
21	51	✓	▲			
		○		180 m		⊗

R3

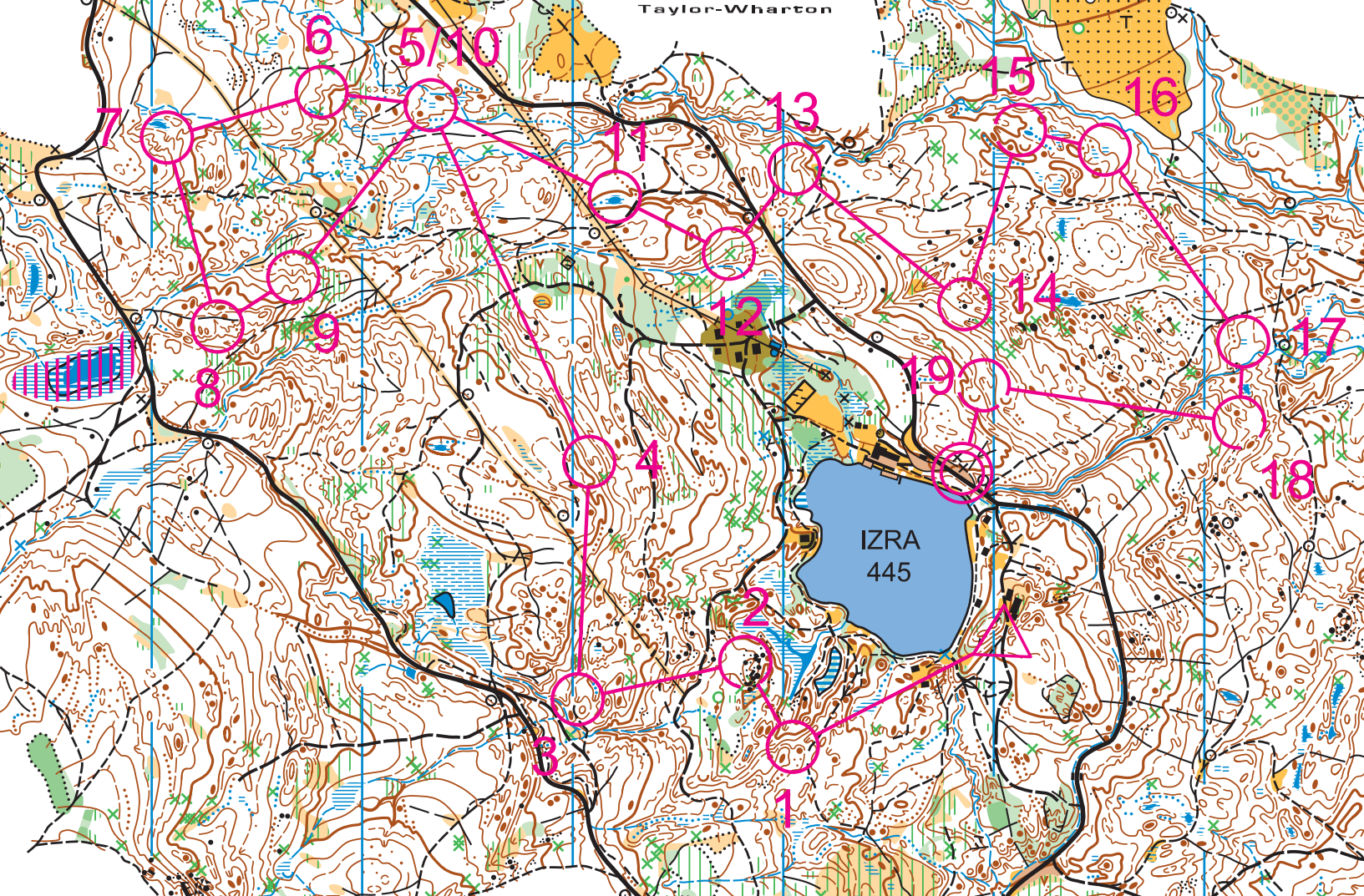
Špeciálne symboly - special symbols

○ výrazný strom - single tree

× plošinka - charcoal burning place

× vývrat - root stock

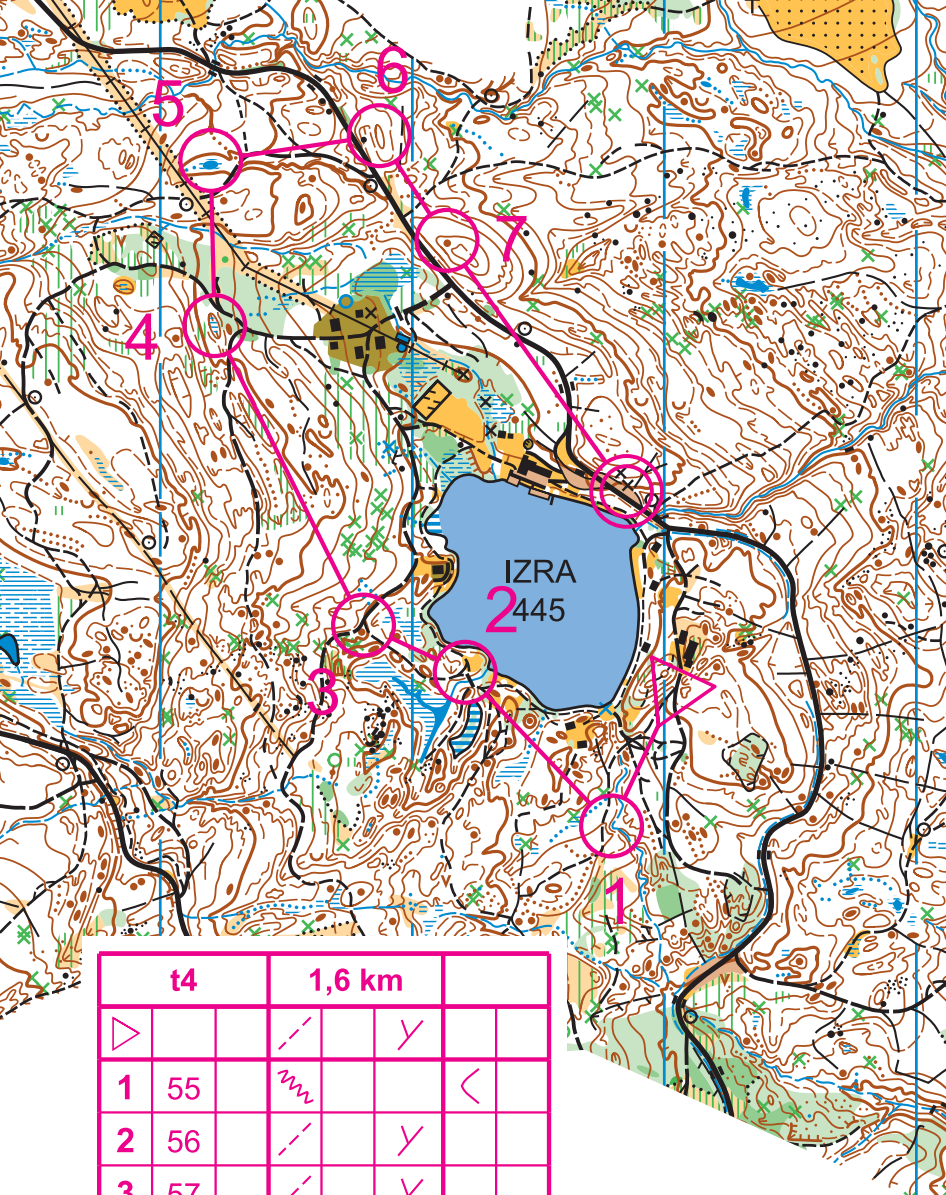
✓ umelý objekt - artificial object



B		4,2 km			
▷		↗	↘		
1	31	∩	—		
2	32	↖	▲		○
3	62		∩		
4	34		∩		
5	43		≡		
6	42		∩		

7	39		∩		
8	41		∩		
9	38	←	∩		
10	43		≡		
11	59		≡		○
12	45		⊗		○
13	46		∩		
14	51	▲			♀

15	50		∩	—		
16	49		≡			
17	48		≡			
18	47	↘	∩			
19	52	→	∩			
⊗		110 m		⊙		



t4		1,6 km		
▷		/	∕	
1	55	⚡	∕	<
2	56	/	∕	
3	57	/	∕	
4	58	⊖		
5	59	≡		⊙
6	60	○		
7	61	•		
○		310 m		⊙